



ATF-6 β rabbit pAb

Cat No.:ES1724

For research use only

Overview

Product Name	ATF-6 β rabbit pAb
Host species	Rabbit
Applications	WB;IHC;IF;ELISA
Species Cross-Reactivity	Human;Rat;Mouse;
Recommended dilutions	Western Blot: 1/500 - 1/2000. ELISA: 1/20000. Not yet tested in other applications.
Immunogen	The antiserum was produced against synthesized peptide derived from human ATF6B. AA range:401-450
Specificity	ATF-6 β Polyclonal Antibody detects endogenous levels of ATF-6 β protein.
Formulation	Liquid in PBS containing 50% glycerol, 0.5% BSA and 0.02% sodium azide.
Storage	Store at -20°C. Avoid repeated freeze-thaw cycles.
Protein Name	Cyclic AMP-dependent transcription factor ATF-6 beta
Gene Name	ATF6B
Cellular localization	Endoplasmic reticulum membrane ; Single-pass type II membrane protein .; [Processed cyclic AMP-dependent transcription factor ATF-6 beta]: Nucleus . Under ER stress the cleaved N-terminal cytoplasmic domain translocates into the nucleus. .
Purification	The antibody was affinity-purified from rabbit antiserum by affinity-chromatography using epitope-specific immunogen.
Clonality	Polyclonal
Concentration	1 mg/ml
Observed band	90kD
Human Gene ID	1388
Human Swiss-Prot Number	Q99941
Alternative Names	ATF6B; CREBL1; G13; Cyclic AMP-dependent transcription factor ATF-6 beta; cAMP-dependent transcription factor ATF-6 beta; Activating

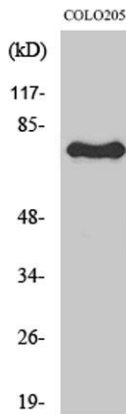




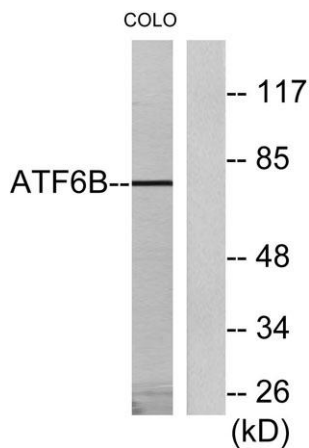
Background

transcription factor 6 beta; ATF6-beta; Protein G13; cAMP response element-binding protein-related protein;

The protein encoded by this gene is a transcription factor in the unfolded protein response (UPR) pathway during ER stress. Either as a homodimer or as a heterodimer with ATF6-alpha, the encoded protein binds to the ER stress response element, interacting with nuclear transcription factor Y to activate UPR target genes. The protein is normally found in the membrane of the endoplasmic reticulum; however, under ER stress, the N-terminal cytoplasmic domain is cleaved from the rest of the protein and translocates to the nucleus. Two transcript variants encoding different isoforms have been found for this gene. [provided by RefSeq, Oct 2008],



Western Blot analysis of various cells using ATF-6 β Polyclonal Antibody

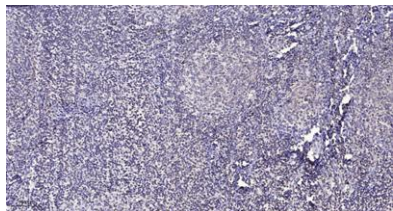


Western blot analysis of lysates from COLO205 cells, using ATF6B Antibody. The lane on the right is blocked with the synthesized peptide.





ELK Biotechnology



Immunohistochemical analysis of paraffin-embedded human tonsil. 1, Antibody was diluted at 1:200(4° overnight). 2, Tris-EDTA,pH9.0 was used for antigen retrieval. 3,Secondary antibody was diluted at 1:200(room temperature, 30min).



+86-27-59760950

ELKbio@ELKbiotech.com

www.elkbiotech.com

23-2, No.388 Gaoxin 2nd Road,Wuhan East Lake Hi-tech Development Zone, Hubei , P.R.C